





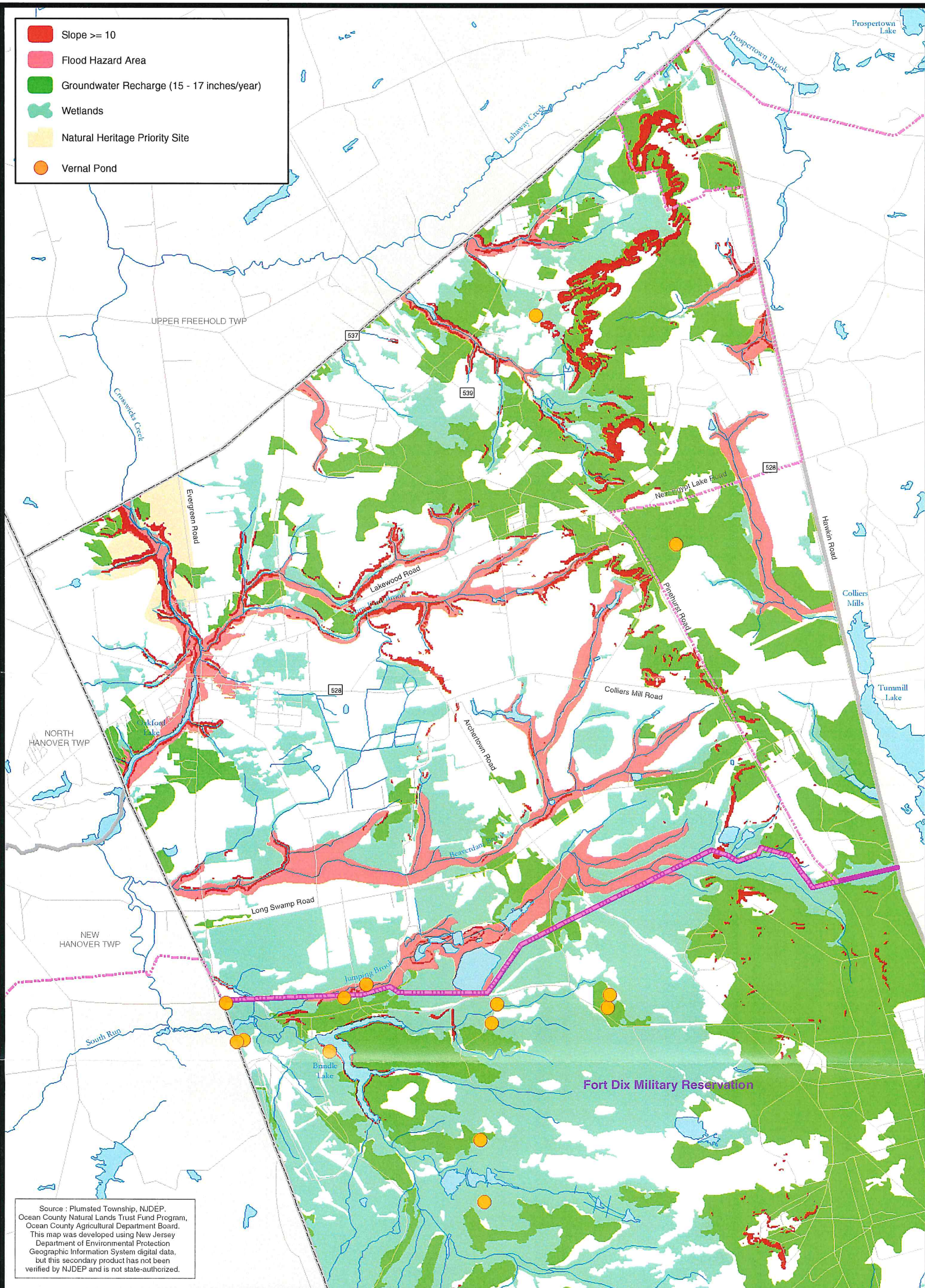


-  Slope  $\geq 10$
-  Flood Hazard Area
-  Groundwater Recharge (15 - 17 inches/year)
-  Wetlands
-  Natural Heritage Priority Site
-  Vernal Pond



Source : Plumsted Township, NJDEP,  
Ocean County Natural Lands Trust Fund Program,  
Ocean County Agricultural Department Board.  
This map was developed using New Jersey  
Department of Environmental Protection  
Geographic Information System digital data,  
but this secondary product has not been  
verified by NJDEP and is not state-authorized.

# **Plumsted Township** **Conservation** **Element**

Map 14:  
Critical  
Environmental Areas